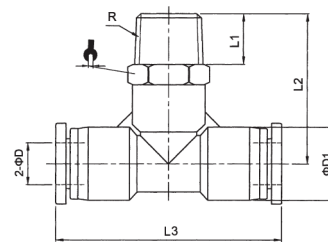


IPB Branch Swivel Tee Taper Thread

MODEL	ØD	R	L1	L2	L3	ØD1	↻
IPB04-M5	4	M5	3.5	22.5	38	11.5	10
IPB04-01	4	R1/8	7.5	25	38	11.5	10
IPB04-02	4	R1/4	9.5	28	38	11.5	14
IPB06-M5	6	M5	3.5	23.2	39	13.5	12
IPB06-01	6	R1/8	7.5	25.7	39	13.5	12
IPB06-02	6	R1/4	9.5	28.2	39	13.5	14
IPB06-03	6	R3/8	10.5	29.7	39	13.5	17
IPB08-01	8	R1/8	7.5	29.5	45	15	14
IPB08-02	8	R1/4	9.5	31.5	45	15	14
IPB08-03	8	R3/8	10.5	33	45	15	17
IPB08-04	8	R1/2	13.5	36.5	45	15	21
IPB10-01	10	R1/8	7.5	35	57	19	17
IPB10-02	10	R1/4	9.5	37	57	19	17
IPB10-03	10	R3/8	10.5	38	57	19	17
IPB10-04	10	R1/2	13.5	41.8	57	19	21
IPB12-02	12	R1/4	9.5	38.5	59	21.5	21
IPB12-03	12	R3/8	10.5	39.5	59	21.5	21
IPB12-04	12	R1/2	13.5	42.5	59	21.5	21
IPB16-03	16	R3/8	10.5	44	66	26.5	24
IPB16-04	16	R1/2	13.5	47	66	26.5	24



IPB-G Branch Swivel Tee Parallel Thread

MODEL	ØD	G	L1	L2	L3	ØD1	↻
IPB04-G01	4	G1/8	5.5	25.5	38	11	14
IPB04-G02	4	G1/4	7.5	28	38	11	17
IPB04-G03	4	G3/8	7.5	28.5	38	11	20
IPB06-G01	6	G1/8	5.5	26.7	39	13	14
IPB06-G02	6	G1/4	7.5	28.2	39	13	17
IPB06-G03	6	G3/8	7.5	28.7	39	13	20
IPB08-G01	8	G1/8	5.5	29	45	14.5	14
IPB08-G02	8	G1/4	7.5	31.5	45	14.5	17
IPB08-G03	8	G3/8	7.5	32	45	14.5	20
IPB10-G01	10	G1/8	5.5	34.5	57	18.4	17
IPB10-G02	10	G1/4	7.5	37	57	18.4	17
IPB10-G03	10	G3/8	7.5	37	57	18.4	20
IPB10-G04	10	G1/2	10	40.5	57	18.4	24
IPB12-G02	12	G1/4	7.5	38.5	59	21	21
IPB12-G03	12	G3/8	7.5	38.5	59	21	21
IPB12-G04	12	G1/2	10	41.5	59	21	24
IPB16-G03	16	G3/8	7.5	42.5	66	26	24
IPB16-G04	16	G1/2	10	44.5	66	26	24

