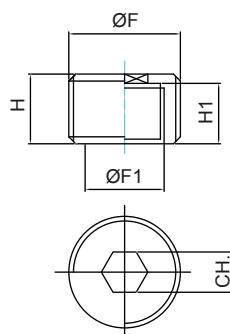


ART. 104S

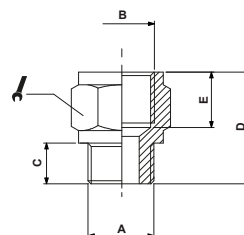
 Riduzione cilindrica a scomparsa
Disapperance parallel reducer

CODICE	F	F1	H	H1		
104S1418	1/4	1/8	8	7	6	50
104S3814	3/8	1/4	9	7	8	50
104S1238	1/2	3/8	10	9	10	25
104S3412	3/4	1/2	14	11	12	10
104S0134	1"	3/4	20	12,5	17	10


ART. 105

 Prolunga M/F conica
Taper M/F extension

CODICE	A	B	C	D	E		
1051818	G1/8	G1/8	8,0	18,0	8,0	14	100
1051814	G1/8	G1/4	8,0	21,5	11,0	17	100
1051838	G1/8	G3/8	8,0	22,5	11,5	22	50
1051414	G1/4	G1/4	11,0	24,5	11,0	17	100
1051438	G1/4	G3/8	11,0	24,5	11,5	22	50
1051412	G1/4	G1/2	11,0	29,0	14,0	24	50
1053838	G3/8	G3/8	11,5	26,0	11,5	22	50
1053812	G3/8	G1/2	11,5	29,5	14,0	24	25
1051212	G1/2	G1/2	14,0	32,0	14,0	26	25
1051234	G1/2	G3/4	14,0	35,0	16,5	32	10
1051201	G1/2	G1	14,0	37,0	18,0	38	10


ART. 105Z

 Prolunga M/F cilindrica
Parallel M/F extension

CODICE	A	B	C	D	E		
105ZM5M5	M5	M5	5	14,0	7,0	9	100
105ZM518	M5	G1/8	4	14,5	8,0	14	100
105ZM618	M6	G1/8	6	16,0	8,0	14	100
105Z1818	G1/8	G1/8	6	16,0	8,0	14	100
105Z1814	G1/8	G1/4	6	19,5	11,0	17	100
105Z1838	G1/8	G3/8	6	20,5	11,5	22	50
105Z1414	G1/4	G1/4	8	21,5	11,0	17	100
105Z1438	G1/4	G3/8	8	22,5	11,5	22	50
105Z1412	G1/4	G1/2	8	26,0	14,0	24	50
105Z3838	G3/8	G3/8	9	23,5	11,5	22	50
105Z3812	G3/8	G1/2	9	27,0	14,0	24	25
105Z1212	G1/2	G1/2	10	28,0	14,0	26	25
105Z1234	G1/2	G3/4	10	30,0	16,5	32	10

